



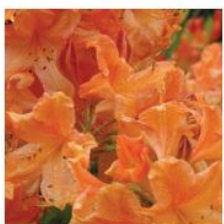
Blue Mountain Nurseries Newsletter

December 2015



Christmas at Blue Mountain Nurseries

Give the gift that keeps on giving! A living gift is a thoughtful gift- there are even birth flowers and trees to celebrate each month of the year. The December birth flower is the Poinsettia- a fabulous plant for Christmas! Birth trees for December are the Fig, Beech and Apple tree.



Star Performers for Christmas 2015

Blue Mountain Nurseries are known for its rare and unusual plants due to the enthusiasm of Denis Hughes and his breeding programmes. One long term success and a Star Performer is **Cornus Greenvale**.



Greenvale is a vigorous upright form of the famous Dogwood tree. The large creamy white flowers cover the plant in early summer lasting for as long as two months. Cornus Greenvale is semi-evergreen with some bronze autumn colour giving it interest through all the seasons. Being semi-evergreen, Greenvale makes a good screening tree for a town garden or a specimen tree growing to 4m high. In our trials of hardy Dogwoods, this tree has outperformed all others every year both in flowering and growth. We highly recommend Greenvale in a sheltered site.



Viburnums

Viburnums are a plant for all season's and they are one of our Star Performers here at the Nursery. They have colourful emerging spring foliage and flower buds, some fragrant and summer foliage that can be dull, glossy, light green, dark green, yellow or variegated. Autumn foliage is varied and provides interest in winter with its persistent fruit and interesting bark and buds. *Viburnum opulus compactum*, commonly called European cranberry bush, is a native to Europe, Asia and North Africa. It is a deciduous shrub with a rounded spreading habit that typically grows to a meter tall. It features lace cap-type white flowers in spring with drooping clusters of cranberry-like red berries and maple-like, dark green leaves that turn many hues of red through autumn.

<http://www.bmn.co.nz/product/viburnum-opulus-compactum/>



Ask Denis

Every issue of the Blue Mountain Nursery newsletter, Denis Hughes will choose a "plant wish-list" question from one of our readers. If you have a question or you're looking for a plant for a particular spot contact us on;

Ph 03-2048-250 web www.bmn.co.nz



<https://www.facebook.com/BlueMountainNurseriesTapanui/?pnref=lhc>

Viburnum opulus 'Compactum'

Q

"This month, Anne of Christchurch asks, "I have a small garden and I want to create a hedged area along a fence. I'm looking for something not too big and easy to maintain. It's full-to-partial sun.

A

"Hedging give structure and formality to your garden all year round. There's plenty to choose from for hedging but it's hard to avoid regular maintenance. I'd recommend *Lonicera nitida*. Similar to *buxus*, this is a very popular fast growing hedge suitable for most conditions. Allow 5 plants per metre for hedging. *Lonicera* makes a very tight formal hedge with regular trimming and responds well to shaping. It is best shaped to a height of 0.45 metres by 0.25 metres if desired.



Hedging Specials 3 for \$15

- *Escallonia x exoniensis*
- *Escallonia macrantha*
- *Escallonia Apple Blossom*
- *Viburnum Evie Price*
- *Viburnum Lucidum*
- *Griselinia littoralis*
- *Pittosporum tenuifolium*
- *Fagus sylvatica*

For something taller, perhaps try *Griselinia littoralis* Canterbury, left. This evergreen New Zealand native broadleaf has attractive dark red stems which contrast well against lush green foliage. Ideal as a hedge, it creates a dense relatively easy care hedge. It also tolerates a wide range of conditions including coastal. Plant in full sun to semi-shade.

"I'm looking for low maintenance plants with interesting foliage and flowers- what do you suggest?"

"*Rhododendron* provide form and interest to the garden even when most of other plants have gone dormant for the season. Both their leaf and flower buds are structural, and are often contrasting colors of chartreuse, rusty brown or maroon. You can't go past these rhododendrons for their appealing foliage- try *Yakushimanum* FCC. This rhododendron forms a rounded shrub of green leathery leaves with rolled edges and heavy indumentum. In springtime, trusses of pink flowers fade slowly to white.

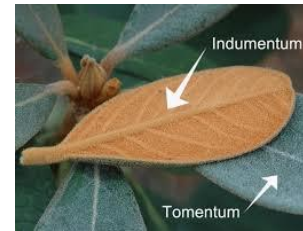
Rhododendron High Society is another choice for both flowers and foliage. It's an evergreen and has pink and cream flowers in late October on a compact bush (1meter) with attractive silver-grey new growth. <http://www.bmn.co.nz/product/rhodo-high-society/>

Rhododendron Cinnamon Bear

This plant is one of the finest foliage plants with masses of soft cinnamon brown indumentum. Indumentum is the attractive cream or fawn-coloured 'furry' layer found on some rhododendron species. Cinnamon bear has tight round trusses of pure white flowers following a light pink bud.

Rhododendron pacysanthum

This is another Rhododendron with interesting foliage- this example has distinctive silvery blue leaves.



In the Garden for December

Plant your herbs now; in particular, basil, chives and coriander. Pop into pots and snip off fresh from the plant! Coriander is a bit of a “bolter” so replant every few weeks to keep your crop going- same for lettuces. In the veggie plot, it’s time for asparagus, beetroot, cabbage, carrots, celery, cucumber, leeks, pumpkins, parsnips, more potatoes, more silverbeet and tomatoes. Feed your tomatoes and keep picking out the side shoots that form in the joint between the stem and the leaf (the laterals) to stimulate growth. Hoe your veggie patch over summer and blitz those irksome weeds.

Happy Christmas from the team at Blue Mountain Nurseries.
Have a safe and relaxing Christmas enjoying
life from your garden!



Chris, Rebecca, Lesley, Bruce, Cheryl, Steffen, James, Denis
Glenis, Dianne, Audrey Pat, Jill and Tanya